

renovation *before & after*



GET THE LOOK

- * **Wallpaper:** Elvins Wallpaper Supermart, Osborne Park, phone: 9444 8566
- * **Kitchen benchtop downstairs:** Liquid Granite, Wangara, phone: 9309 6888
- * **Upstairs kitchen benchtop:** Andes Stonework, Osborne Park, phone: 9444 2888
- * **Light fittings:** Lighting by Design, Osborne Park, phone: 9446 6644, www.lightingbydesign.com.au
- * **Select furnishings:** Harvey Norman; Domain; and Lifestyle Furniture and Housewares, all in Osborne Park



TOUCH OF GLASS

Sasha deBretton-Gordon, far right, in her revamped home in Sorrento. Pictures: Natalie Slade

Using her eye for colour and talent for creativity to the maximum, serial renovator Sasha deBretton-Gordon has taken an ugly duckling and changed it into a beautiful swan

TO Sasha deBretton-Gordon, this was a property that had it all – a good location with ocean views, a spacious floor plan and, most of all, potential.

A serial renovator for some years, Sasha instantly knew the abundance of apricot colouring and the multicoloured curtain pelmets and mismatched decor could make way for a more contemporary theme to give the home a new lease of life.

In addition, with very little structural change, the floor plan could be made more flexible to suit a range of needs.

Sasha, an internet advertising specialist, set herself the task of creating a new blueprint for the five-year-old Sorrento property.

“The home, as it was, featured lots of black-and-gold brass fittings and every window had a different coloured pelmet – red, green, blue – and kitchen tiles with little baskets of fruit,” she says. “It was definitely time for a revamp.”

Sasha wanted to introduce a muted palette of charcoals, blacks, whites and latte/greys with stainless-steel trim and lots of glass mirrors and accessories giving the home an overall retro-contemporary theme that would incorporate compatible art deco touches.

An injection of feminine “bling” was desired, without compromising the overall mood. Textured metallic tiling, gloss surfaces and sequined cushions all make an appearance and the glass fittings and shiny mirrors add to the home’s sparkle.

By filling in a void on the second storey, a new room was created, providing a second kitchen and integrated laundry.

The addition of an extra doorway down-

stairs now allows the five-bedroom, three-bathroom home to operate as two self-contained apartments if needed.

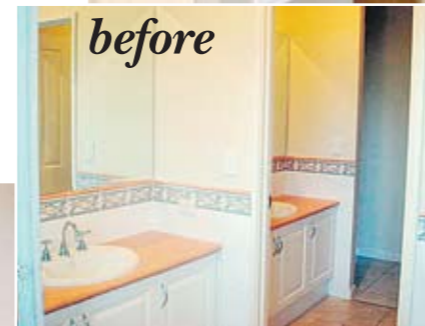
Outside, the front has already lost its peachy colour in favour of a more enduring taupe and work has started on building a rear deck and landscaping the block.

Sasha has filmed the makeover – to be aired

on web resource YouTube – for *Australian Property Investor* magazine.

Says Sasha: “Of course gains on the property development side are a bonus, but to me the bigger part of the thrill is the creative aspect of being able to take something ugly and give it the wow factor.”

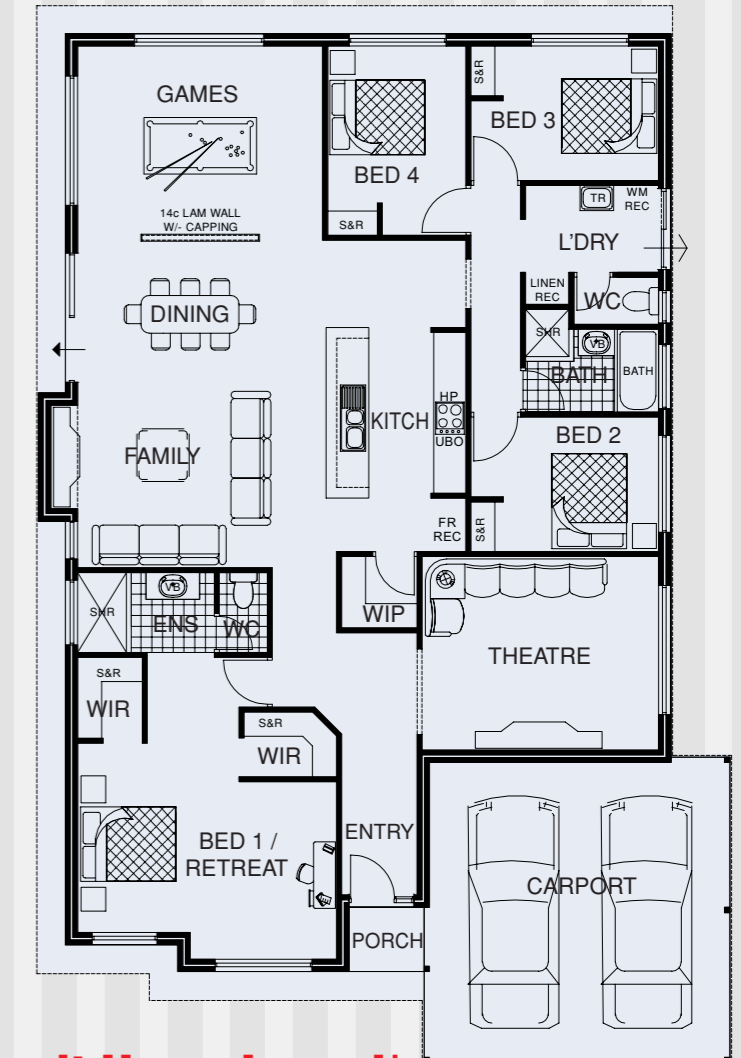
Mara Fox



Optional Elevation for illustration purposes only.
CALL TODAY TO FIND OUT MORE ABOUT THE 60/40 GOVERNMENT SHARED EQUITY SCHEME!*

\$153,990

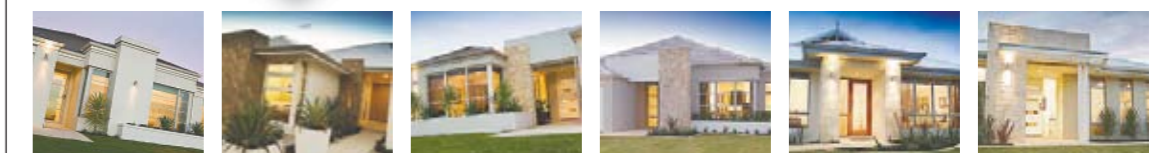
The Ramada Promo



- **No Deposit Home Loans!***
- **House & Land Packages from \$310/wk!***
- **Gov't Shared Equity 60/40 Scheme Specialists!***

Visit one of our display homes today!
Sun: 12-5pm; Mon & Wed: 2-5pm; Sat: 1-5pm

Affordable Living
homes



SANDS | **BELLAGIO** | **MONTECIDO** | **LUXOR** | **MIRAGE** | **RIVIERA**
Impington Rd BUTLER | Chicago Street, SOUTH'N RIVER | Dulegal Way, AVELEY | Arrowwood Lp, SEC. HARBOUR | Runnymede Gate, WELLARD | Tandara Fairway, TAPPING

PHONE: 9302 4920 ALL HOURS
www.affordableliving.com.au

*Conditions Apply TRITON1304